

'Good'
mobile

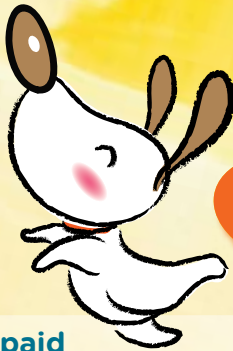
free~flagfall

PREPAID MOBILE PHONE

Budget your call cost with our low-rate prepaid mobile service.

\$0
flagfall

enjoy the good time ...!



10¢
/30sec

no flag-fall prepaid

'Good' mobile \$30 rate (+flagfall) SMS *'yes'* time¹ & *'Good'* time² data expiry days

per 30 seconds charge

30 days 10¢(+0¢) 3¢ ○ × 30

per minute charge

60 days 15¢(+0¢) 6¢ × × 60

(+data) 20¢(+0¢) 9¢ × 500MB 30

comparison[^]

Voda \$30 78¢(+35¢) 28¢ × 250MB 60

Optus \$30 (\$1,\$2,\$3/day) 20¢(+10¢) 28¢ × 500MB 30

• Optus network •

¹ The first 20 minutes of each national call made between 20:00~24:00 to Optus network.

² The first 20 minutes of each national call 24 hours / 7 days to any 'Good' mobile member. ('Good' mobile prepay \$30's new rate is effective from 01/12/2010.)

[^] Comparison figures are extracted from each service provider's website respectively when compiling this comparison chart, dated on 20/01/2010.

* Details overleaf.

Simple is Best!

e.tel

www.etel.com.au

E.Tel Communications Pty Ltd | 1300 38 35 88
Level 5, 724-728 George St, Sydney 2000 (HSBC building)

Service fees and charges for Good Mobile prepaid credit \$30

service items	rates
national, 13 & 18 number call	\$0.10/30sec (\$0 flagfall; charged by 30 sec)
'yes' time ⁴ (20.00-24.00 to any Optus)	\$0
'Good' time ⁵ (24/7 to any good member)	\$0
national SMS ⁶ (up to 160 characters)	\$0.03 each
international SMS (up to 160 characters)	\$0.35 each
voicemail	\$0.03/30sec
standard / video MMS	\$1.75 each
123- ask us anything	\$1.75/30sec
1223- directory assistance	\$2.60/call + call rate if through connected
international calls	visit www.etel.com.au for details
other service items	
mobile internet (GPRS/3G) (conditions apply)	\$9.95/200Mb; \$14.95/500Mb; \$19.95/1G; \$39.95/3G + exceeding data \$0.10/Mb
15 & 19 number call	dependant on service you are calling
and more...	visit www.etel.com.au for details

Summary of special terms and conditions:

1. Service provided includes standard & national voice calls to any mobile or landline, standard SMS and SMS alerts, MMS and Voicemail, 123 and 1223 directory assistance numbers, etc.; subject to E.Tel's full terms, conditions and relevant amendments. Other conditions apply to GPRS, IDD and International Roaming etc. All prices listed are GST inclusive and are subject to change. 2. You can carry over your unused credit if you recharge before call credit expires. The expiry days will be calculated from the latest recharge date for 30 days / 90 days. 3. Any credit purchased is not refundable or transferable after activation. 4. Calls are free for the first 20 minutes of each national call made between 20:00~24:00 to Optus network. Calls exceeding the initial 20 minutes will then be charged at the standard call rate. 5. Calls are charged 10¢ for the first 20 minutes of each national call to any 'Good' member. Calls exceeding the initial 20 minutes will then be charged at the standard call rate. 6. Fair use policy: 3¢ per SMS, up to 500 SMS within every 30 days block; a higher rate of 25¢ per SMS applies afterwards. 7. To view your call records and latest credit balance, visit www.etel.com.au. 8. You may change your plan whilst keeping your credit only within 'free flagfall prepaid' plans, upon recharging with the new credit amount. Your new call rates will be effective from the date applied. 9. If you change to other plan types, your existing credit will forfeit on the date applied. Any previous outstanding balance, if any, will be charged once all relevant CDR has been received and processed. 10. If your account payment is not via credit card or saving account auto-recharge, a minimum \$5 call credit must remain in your account at any time. 11. E.Tel will notify you via SMS to recharge when your credit expires or upon reaching your credit limit. E.Tel may increase your account credit limit depending on your credibility history. 12. Due to the nature of this prepaid billing account, there could be more than 2 days delay in retrieving call data from our network provider. You are responsible to pay for all usage of your account, including delayed transaction items. 13. Your account will be suspended if you have not recharged after your credit expires. 14. Your account will be terminated if you leave your account suspended for 30 days. 15. A new number acquired from us cannot be ported out to any other service provider within the first 6 months. 16. E.Tel reserves the right to suspend or terminate your service once your credit limit is reached and/or direct debit is rejected, or if we suspect that there is extraordinary usage that may incur bad debt. 17. E.Tel reserves the right to terminate the service in suspected cases any misuse or abuse, and also the right to deny service to those with suspicious or unreliable credit histories. 18. E.Tel reserves the right to block or cancel premium text services on behalf of the customer if the customer has not explicitly notified us previously of their intention to use the premium service. 19. A replacement fee of \$25 applies when requesting a new SIM card under all circumstances. 20. We may send free news and notifications via SMS from time to time, if you would not like to receive these messages please contact us. 21. This 'free flagfall prepaid' service is subject to modification, withdrawal or supplement without advance notice. 22. E.Tel assures the accuracy of information revealed in this brochure at the time of printing 01/08/2010. Please regularly visit www.etel.com.au for updated rates, full terms, conditions and relevant amendments, or simply call 1300 38 35 88.

